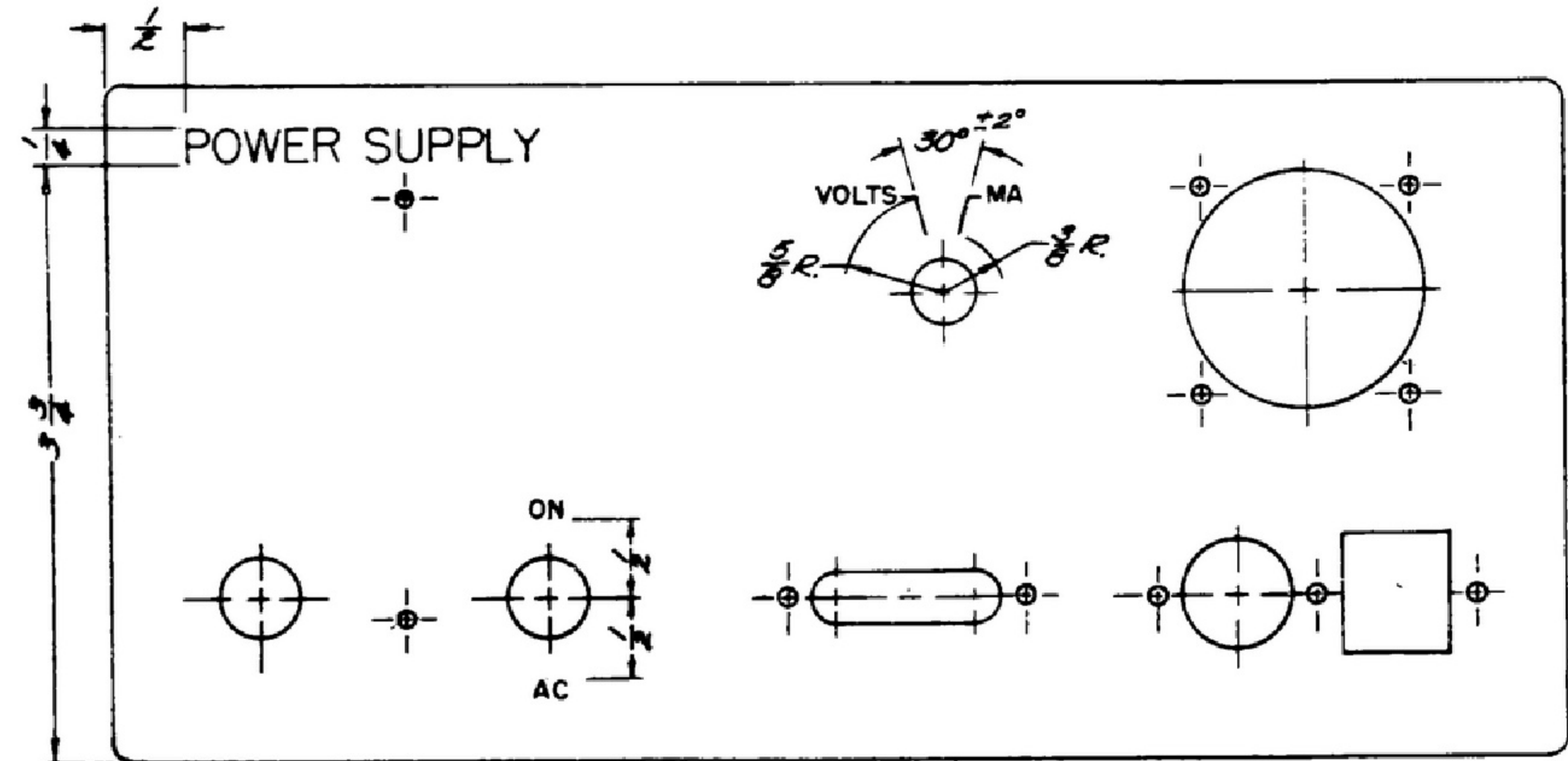
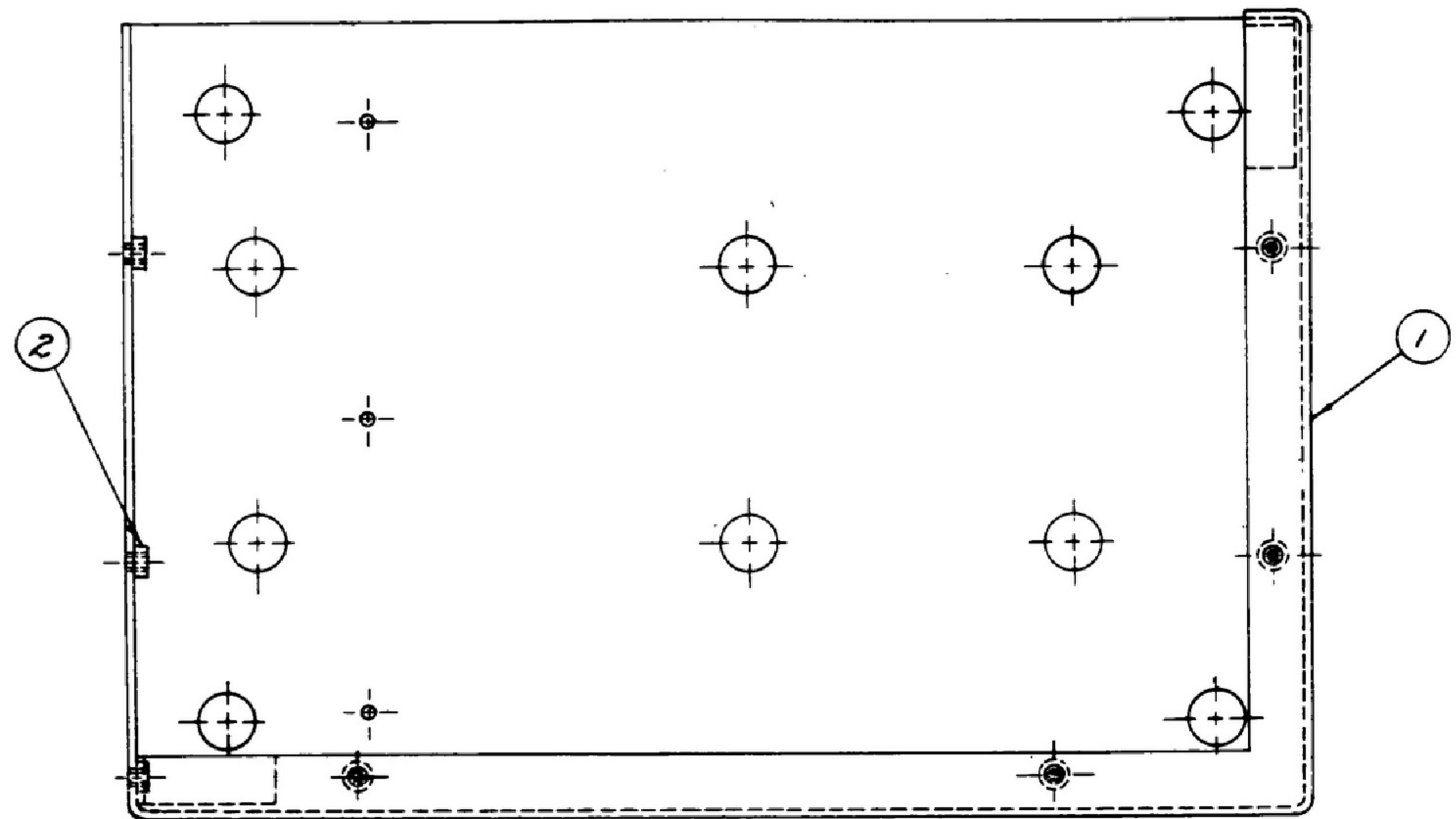


ORIG. ISSUE A	REVISIONS	16 Aug 56
SYM	DESCRIPTION	DATE APPROVAL

NOTES: WHEN GOVERNMENT DRAWINGS, SPECIFICATIONS, OR OTHER DATA ARE USED FOR ANY PURPOSE OTHER THAN IN CONNECTION WITH A SPECIFICALLY RELATED GOVERNMENT PROCUREMENT OPERATION, THE UNITED STATES GOVERNMENT TAKES NO RESPONSIBILITY FOR ANY DELAY OR DAMAGE WHATSOEVER AND THE FACT THAT THE GOVERNMENT MAY HAVE FORMULATED, PROVIDED, OR IN ANY WAY SUPPLIED THE SAID DRAWINGS, SPECIFICATIONS, OR OTHER DATA IS NOT TO BE CONSTRUED BY CONTRACTORS OR OPERATORS AS AN ENDORSEMENT OR RECOMMENDATION OF ANY PRODUCT OR SERVICE, OR AS A WARRANTY OF MERCHANTABILITY OR FITNESS FOR ANY PARTICULAR PURPOSE, OR AS A WARRANTY OF MERCHANTABILITY, USE, OR AS A WARRANTY OF FITNESS FOR ANY PARTICULAR PURPOSE.

THIS DOCUMENT HAS BEEN FORWARDED BY THE GOVERNMENT AND ONLY IN CONNECTION WITH A SPECIFICALLY RELATED GOVERNMENT PROCUREMENT OPERATION.

\* FOR INFORMATION ONLY. CONTRACTOR MAY AT HIS OPTION DEVIATE FROM THESE PROCESS DETAILS.



DET. NO	REQD	PART NO.	DESCRIPTION	MATL	FINISHED SIZE	QTY	NOTE
2	7	SM-C-31960-1	NUT #CL-440-2	STEEL			1
1	1	SM-D-31961	CABINET				

- NOTES:
- SUPPLIED BY PENN ENGINEERING & MFG CORP, DOYLESTOWN PENN. OR EQUAL.
  - FINISH: P513 PER SPEC MIL-F-14072, FINAL PAINT FILM BLACK, TYPE I, PER SPEC MIL-E-555B.
  - ENGRAVE CHARACTERS AND/OR MARKINGS 1/8 HIGH UNLESS OTHERWISE SPECIFIED. AFTER FINISH IS APPLIED, FILL CHARACTERS WITH PERMANENT ALUMINUM.

UNLESS OTHERWISE SPECIFIED	
DIMENSIONS ARE IN INCHES	
TOLERANCES ON FRACTIONS	DECIMALS ANGLES
$\pm 1/64$	2.005 —
SCQ-57750	
SM-D-31959	SCQ-57655
NEXT ASSY	USED ON
APPLICATION	

COLLINS RADIO CO CEDAR RAPIDS, IA 08719-PH-55-93		<b>CABINET ASSY</b> FOR POWER SUPPLY FOR INTERCHANGEABILITY GAGE FOR R-390A/URR AND R-392/URR	DEPARTMENT OF THE ARMY SIGNAL CORPS ENGINEERING LABORATORIES FORT MONMOUTH NEW JERSEY
REVIEWED	XXX		
APPROVED	<i>[Signature]</i>	<b>SM-C-31960</b>	
DATE	16 AUG 56	SCALE	1/1